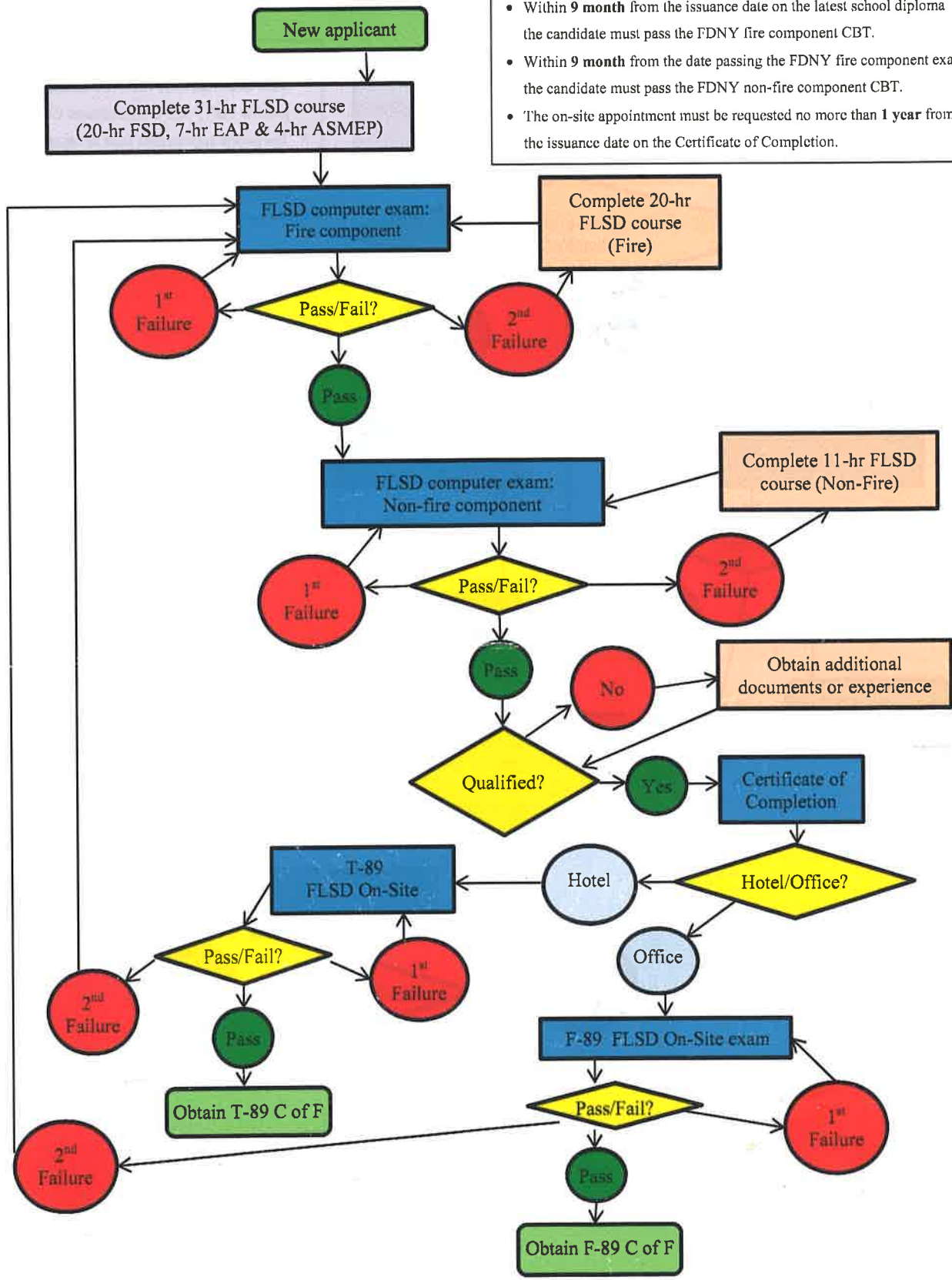
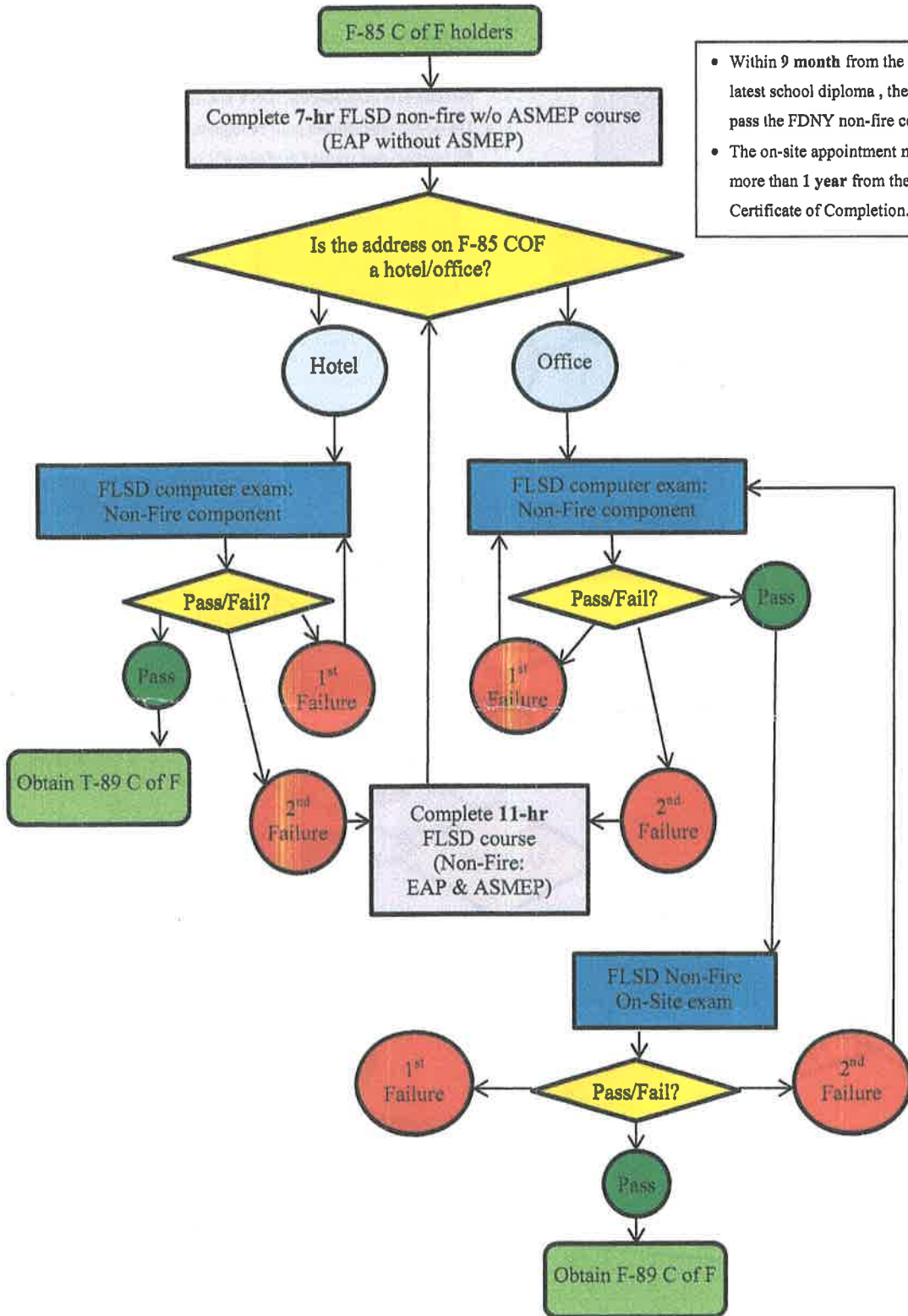


Flow chart of the procedures for NEW applicants

- Within **9 month** from the issuance date on the latest school diploma , the candidate must pass the FDNY fire component CBT.
- Within **9 month** from the date passing the FDNY fire component exam, the candidate must pass the FDNY non-fire component CBT.
- The on-site appointment must be requested no more than **1 year** from the issuance date on the Certificate of Completion.



The flow chart of a F-85 C of F holder



- Within 9 month from the issuance date on the latest school diploma , the F-85 candidate must pass the FDNY non-fire component CBT.
- The on-site appointment must be requested no more than 1 year from the issuance date on the Certificate of Completion.